



COMPANY CAPABILITY STATEMENT

Building Results

VERSION 06 - 2024

COMPANY OVERVIEW

Hawkins Group is a Queensland based construction company with extensive experience and a reputation as a professional company providing a wide range of solutions for the civil, infrastructure, resources, mining and energy sectors.

We are a privately owned company who has traded for over thirty years. Hawkins Group have completed a wide range of projects in the industrial, mining, civil & domestic fields along with large Government funded projects and currently operate out of Beenleigh (South-East QLD) and Mackay (Central Queensland). Hawkins Group provides a broad range of services such as:

- Design and Construct
- Construct Only
- Schedule of Rates Contracts
- Fixed Lump Sum Contracts
- Engineering Procurement Construction Management
- Joint Ventures and Alliances
- Labour Hire

Hawkins Group has both Public Liability & Contractors Risk Insurance. We have Workplace, Health, Safety & Environment Policies & Procedures which are implemented on all our projects. Hawkins Group is compliant with the National Code of Practice for the Construction Industry.

Yours Sincerely

Alex Currie

General Manager | Director | Hawkins Group
M: 0438 347 424 E: alex@hawkinsgroup.com.au
MACKAY
20 Evans Ave
North Mackay QLD 4740

Rod Hawkins

Managing Director | Hawkins Group
M: 0418 786 778 E: rod@hawkinsgroup.com.au
BRISBANE
3/6 Lochlarney St
Beenleigh QLD 4207



COMPANY INFORMATION

TRADING NAME:	HAWKINS GROUP PTY LTD HAWKINS GROUP CQ PTY LTD
ABN:	87 055 074 470 78 668 018 915
YEAR ESTABLISHED:	1989 2023
BUILDERS LICENCE:	QBCC #57745 #15395111
ELECTRICAL CONTRACTORS LICENCE:	92416
REFRIGERANT TRADING AUTHORISATION:	AU62087
LABOUR HIRE LICENCE:	LHL-01859-X3P2T
WORK COVER QUEENSLAND:	WNA 930166491
INSURANCES:	PUBLIC LIABILITY, PROFESSIONAL INDEMNITY & CONTRACTORS RISK INSURANCE
OFFICE ADDRESS:	UNIT 3/6 LOCHLARNEY STREET BEENLEIGH QLD 4207 20 EVANS AVE NORTH MACKAY QLD 4740
PHONE:	+61 7 3807 4222
EMAIL:	MAIL@HAWKINSGROUP.COM.AU CQMAIL@HAWKINSGROUP.COM.AU

WHAT WE DELIVER



MINING & RESOURCES

- MIA, Tyre & Wash Bays
- Civil
- Infrastructure
- CHPP Down Days
- Temporary Facilities
- Structural Remediation
- Haul Roads and Crossings
- Mine Maintenance Services



PORT INFRASTRUCTURE

- Design
- Construction (Civil, Structural, Services)
- Maintenance



TEMPORARY STRUCTURES

- Container Mounted Domes
- Post Mounted Domes
- Dome Installation



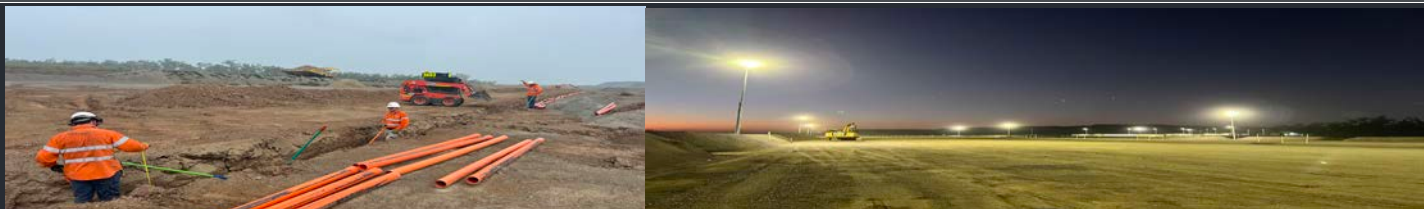
ACCOMMODATION VILLAGES

- Design
- Fabrication
- Construction
- Refurbishment & Expansion



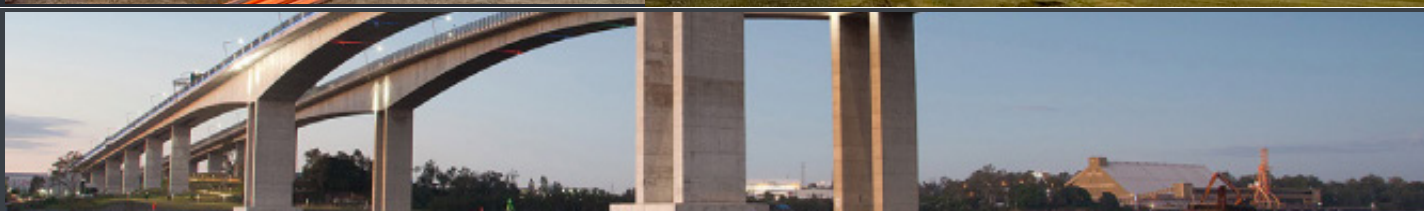
ELECTRICAL & MECHANICAL SERVICES

- Maintenance & Shutdowns
- Electrical Projects
- Mechanical Services
- Electrical Supervision, Shift Relief, Labour Hire



MAJOR INFRASTRUCTURE

- Labour Hire
- Site Establishment
- Civil Works



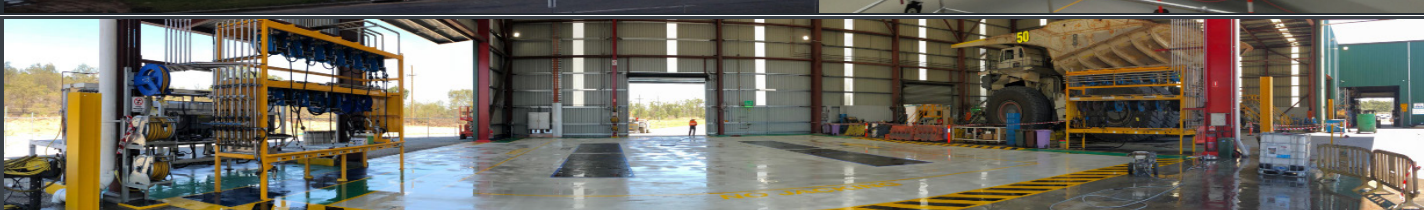
DEFENCE & AVIATION

- Concreting
- Hangars
- Construction Management



FUEL & LUBRICANTS

- Fuel Farm Facilities
- Lubricant Facilities
- Hose Reel Stands
- Piping



LABOUR & PLANT HIRE

- Labour Hire
- Plant Hire

DESIGN & FEASIBILITY STUDIES GENERAL FABRICATION

- 3D Modelling
- Traffic Flow Plans
- Design Coordination
- Structural Steel Fabrication
- Custom Fabrication

MINING & RESOURCES

OVER THE PAST 35 YEARS, WE'VE COME TO UNDERSTAND THE SPECIAL CHALLENGES OF THE MINING, RESOURCE AND ENERGY SECTOR.

Distance, durability and safety all loom large on projects in remote locations where machinery is as huge as the expectations. Our experience comes from years of working in the industry, delivering more Queensland Coal Mine workshops than any other builder, some of these projects are listed below:

- Gun Powder / Capricorn Copper Mine 1998;
- Dawson North – Design & Construct 2005;
- Saraji Mine – Design and Construct 2006
- Poitrel Mine– Design & Construct 2007;
- Sonoma Mine – Design & Construct 2008;
- Moorvale Mine – Design & Construct 2009;
- Coppabella (Stage 1) – Design & Construct 2009;
- Middlemount Mine – Design & Construct 2011;
- Coppabella (Stage 2) – Design & Construct 2012;
- Byerwen Mine – Design & Construct 2017;
- Coppabella (Stage 3) – Design & Construct 2018; and
- Foxleigh Mine – Design & Construct 2019.
- Carmichael Mine – Design & Feasibility 2021-2022 | Service Bay Construct 2023.
- Isaac Downs Mine – Design & Feasibility 2022.
- Hail Creek Mine, Carrinyah Infrastructure Area – Construct 2024.

MINING INDUSTRIAL AREAS

COPPABELLA MINE MIA

Hawkins Group constructed the original workshop facility which included a 20 tonne overhead crane, heavy vehicle wash facilities, stores facility, administration and ablutions facilities. Our success with this major facility led to expansion projects in 2013 and 2018. The first expansion project was a single bay ultra-class workshop with a 25-tonne overhead crane, storage racking and 300 metres of stainless steel pipework servicing the lube facility. Workshop hose reel stands and multi compartment storage tanks formed part of the facility along with a new ultra class mine truck wash bay and dirty water treatment system. The second expansion project comprised the construction of an additional ultra-class workshop bay and adjoining jacking apron slab, overhead crane rail extension and new lubricant hose reel stand and stainless steel pipework.



MIDDLEMOUNT MINE MIA

The project included design and construction of the entire Mine Industrial Area, including drive-through, six-bay maintenance workshops for CAT797 ultra-class trucks, and a fuel and lube facility. Major building components were fabricated in our workshop and we sourced the specialised tanks and overhead cranes and transported them to site. The construction included a range of buildings and their associated roadwork and utilities.

Facilities included:

- Main administration building; Boilermakers shed;
- Separate heavy vehicle and light vehicle wash facilities;
- Jacking slab and tyre handling facility, including storage shed and offices; Lubricant facility including pod storage racks.
- Fuel farm facility.

CARRINYAH INFRASTRUCTURE AREA

Hawkins Group were engaged by Ausco to install crib rooms, offices and ablutions as well as covered walkways and BBQ Areas. Following successful delivery of this contract Hawkins Group were engaged directly by Glencore to deliver the Carrinyah Infrastructure Area civil and infrastructure works comprising: Transformer and MSB concrete structures; Site Wide Lighting; Site Wide Foundations & General Civil; Services Trenching, conduit installation and cable pull; and Services Installation & Commissioning (Electrical, Communications, Sewer & Water).



WASH BAY FACILITIES

Hawkins Group are known for delivering quality and hard-wearing Heavy and Light Vehicle Wash Bays. We can design, fabricate, install and commission Wash Bay's to suit our clients budgetary, environmental and operational requirements and constraints. We avoid long-leads with procurement by fabricating all steel components in-house and from being a distributor of water monitors (cannons) for the Akron Brass Company.

COPPABELLA MINE

Hawkins Group designed and built a Heavy Vehicle Wash Bay suitable for washing Ultra Class Dump Trucks as well a tracked plant. The Wash Bay comprised:

- Concrete construction including fibre reinforced slab with rails for tracked plant, beach and treatment pits;
- Two gantry platforms with eight cannons, and six slab mounted cannons;
- Emergency E-Stops and lighting; and
- Water storage tanks, hose reels and puraceptor.



MIDDLEMOUNT MINE

Hawkins Group delivered a Heavy vehicle Wash Bay designed for Cat 797 Trucks as well as a separate covered Light Vehicle Wash. The HV Wash Bay comprised:

- Concrete construction including fibre reinforced slab with rails for tracked plant, beach pit and treatment pits;
- Two gantry platforms with six cannons;
- Emergency E-Stops and lighting; and
- Water storage tanks, hose reels and puraceptor.



BYERWEN MINE

Hawkins Group designed and built a Heavy Vehicle Wash Bay for the Mines Cat 793 Trucks with an adjoining Light Vehicle Wash Bay. The HV Wash Bay comprised:

- Concrete construction including fibre reinforced slab, beach pit and treatment pits;
- Two gantry platforms with four cannons;
- Emergency E-Stops and lighting; and
- Water storage tanks, hose reels and puraceptor.



TYRE BAY FACILITIES

Hawkins Group can design and construct tyre bays (among other concrete structures) using the following systems:

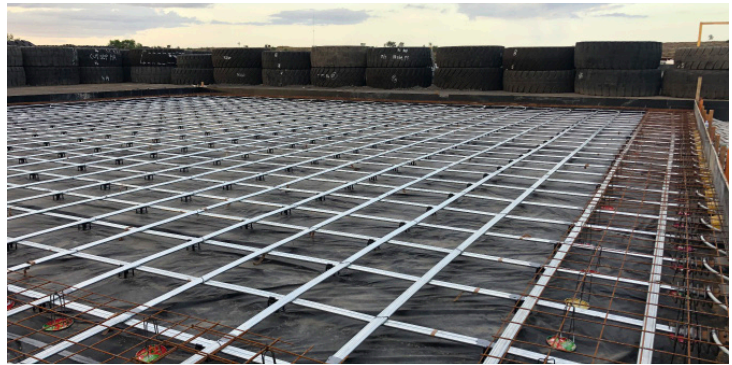


This capability ensures that we provide the right solution for our clients and to suit the ground conditions of the site.

FOXLEIGH MINE

Hawkins Group were engaged to design and construct a Heavy Vehicle Tyre Bay Slab for tyre changing operations / jacking of Cat 793 Dump Trucks at Foxleigh Mine, Middelmont.

Hawkins Group used a Post-Tensioned concrete design placed on a 100mm blinding slab for the 20x20m slab construction.



BYERWEN MINE

Hawkins Group designed and constructed a 10x8 meter fibre reinforced Tyre Bay Jacking Slab at Byerwen Mine as part of the MIA construction project.



TEMPORARY FACILITIES

Hawkins Group specialise in the installation of transportable facilities, we can fabricate our own facilities or procure them from our network of suppliers who have historically used us to install their facilities. We have installed and demobilised offices for major infrastructure projects for clients such as CPB Contractors & Lendlease as well as for Mining & Resource Sector clients, where we have also leased and sold offices to suit our clients requirements. In addition to the projects listed below Hawkins Group have also supplied office complexes to Millenium, Byerwen, Baralaba North, Moorvale, Middlemount and Sonoma Mines (to name a few).

POITREL ADMINISTRATION PRESTART BUILDING

Installation of client supplied 48m x 31m office complex to an existing site office.



MINI CONTROL ROOMS

Supply and install of nine separate buildings on nine separate sites in the Bowen Basin. The buildings are for BMA Pipelines control rooms. Hawkins Group handled everything from council approvals, design, building install, logistics, plumbing, data and electrical install. The job consisted of decommissioning and removing existing control rooms and replacing with new ones.



COPPABELLA MINE

Supply and installation of offices, ablutions, crib rooms and pre-start area adjoining the main workshop at Coppabella Mine for Peabody Energy.



QGC SITE OFFICES

Construction of office complex's for Murphy Pipe and Civil at various locations in the Darling Downs on QGC sites. This includes install of client supplied buildings and the supply and install of decks, roofs, electrical and plumbing. Sites can be setup up on dry laid blocks or post and rail depending on site conditions and client requirements.



FOXLEIGH MINE ADMIN

Supply and install of the following facilities to the Foxleigh Mine MIA and satellite site;

- 12x15 meter office and two 12x6 meter offices;
- Two 12x3m Ablution Blocks; and
- Custom 15x12m shade sail and skillion roof.



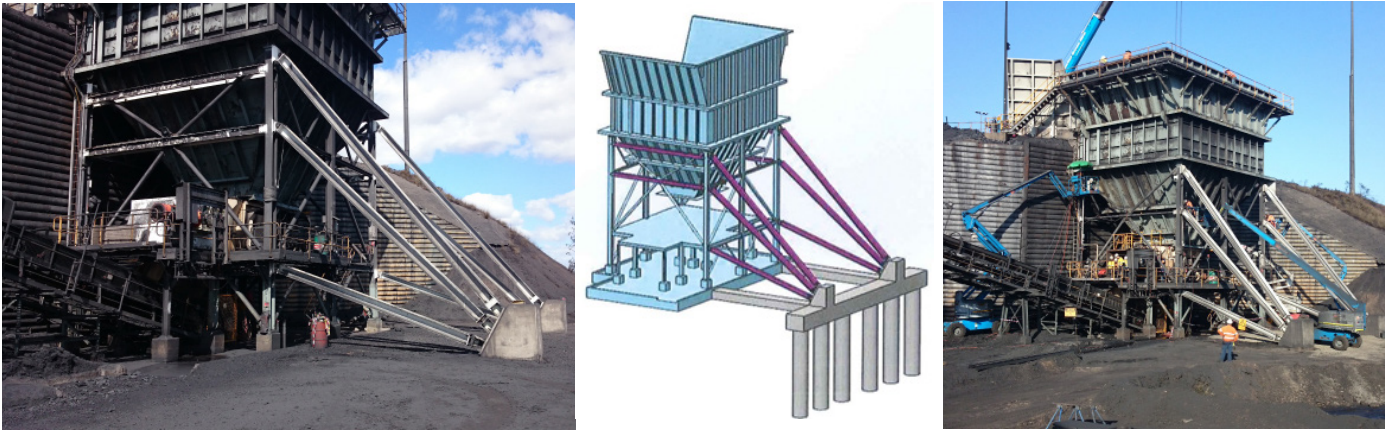
MOOREVALE SOUTH

This project consisted of relocating offices, crib rooms and ablutions to Moorvale South Mine and completing all footings, water and drainage, covered walkways and footpaths.



STRUCTURAL REMEDIATION WORKS

Hawkins Group have the capability to complete structural remediation works for a wide range of process and non-process infrastructure assets. An example of the work we can perform is structural propping and piling. Hawkins Group have completed structural propping and piling works to strengthen existing ROM bins, on projects for both remediation and increased operational loading purposes.



HAUL ROADS AND CROSSINGS

Hawkins Group use our own plant, equipment and operators to construct haul roads, culverts and crossings for mining, resources and other sectors. We also have the capability to fabricate pre-cast and in-situ concrete structures.

ROPER CREEK HAUL ROAD CROSSING

During a typical Central Queensland wet season, flooding washed out Middlemount Coal Mine's main haul road at the Roper Creek crossing. The main haul road was utilised 24 hours a day to haul coal from the pit to the ROM. Hawkins Group were engaged to undertake the major repairs, including the installation of culverts, bulk earthworks and concrete head walls to enable the re-opening of the haul road.



PORT INFRASTRUCTURE

WE KNOW THE REQUIREMENTS, CONSTRAINTS AND OPERATIONAL NEEDS OF PORT FACILITIES - AND DESIGN, CONSTRUCT AND MAINTAIN PORT FACILITIES.

Hawkins Group have been involved in the design and construction of existing expansion and new port facilities in Queensland. Our experience is predominantly with the construction of Bulk Liquid Terminal facilities such as the GrainCorp Bulk Liquid Terminals in Pinkenba, Queensland.

We can manage the design and construction of Ports and work with specialist contractors and suppliers for the procurement and installation of items such as Bulk Storage Tanks.

GRAINCORP LIQUID TERMINALS

Hawkins Group was engaged as Principal Contractor to manage and undertake the civil and construction package at GrainCorp's new liquid storage facility at Pinkenba, Qld. The site consisted of a 40,000m² green field site located adjacent to the swampy mangroves of the Brisbane River.

The project included clearing and grubbing of the entire site along with extensive bulk earthworks to 40,000m² of gypsum material.

To maintain the tight schedule Hawkins Group proceeded to carry out the supply and installation of 1000 lineal meters of cast in-situ Xypex treated 3m high concrete bund wall in conjunction with the bulk earthworks. Over 20,000m² of sealed roadways, 5000m² of fibre reinforced concrete pavements and associated underground and above ground drainage was installed over the course of 8 months.



The installation of a 130,000 litre oily water interceptor with hung concrete weirs, coalescent plates and oversized pneumatic valving was supplied and installed. Hawkins Group also provided supply and installation of all building works to complete the required pump house, electrical communication room cast in situ cable pit and main office.

Additional to the extensive civil works carried out the contract also included the supply and installation of approximately 22,000m² of HDPE liner for spill containment.

Hawkins Group undertook the management of all sub-contractors required to complete the civil and construction portions of the project, this included electrical, pipe installation, asphalt and

To carry out such a project to budget and time schedules close relationships were formed with adjacent property owners, Queensland Urban Utilities, The Port of Brisbane, Brisbane City Council and fellow contractors on site. Hawkins Group worked closely with GrainCorp the client and various engineering consultants to complete the project safely, under budget and to schedule.

Our success with the above project has lead to further expansion works for GrainCorp at their other sites.



TEMPORARY STRUCTURES

FAST AND ECONOMICAL TEMPORARY CONSTRUCTION.

Hawkins Group have been involved in the design and construction of domes for mining and commercial applications, installing domes for our own projects as well as leading dome manufacturers.

A temporary dome structure can be a cost saving alternative to a conventional structure, if you would like to find out more information on pricing please contact us.

TEMPORARY STRUCTURES

Hawkins Group can design and procure custom domes for workshops and other applications to suit your requirements. We work with dome suppliers to design suitable tie-downs (sometimes engineering the workshop slab) to meet wind load requirements for the project location and provide a full installation service. We can provide budget comparisons for permanent and temporary workshop, where budget or project lifetime is limited a dome workshop can be an attractive solution. We have provided domes for workshops, stores and other applications across Queensland and have installed domes for dome suppliers across Australia.

FOXLEIGH MINE SERVICE BAYS

Hawkins Group designed and constructed two service bay workshop container mounted domes suitable for servicing Cat 793 trucks (tray-up). The workshop slab consisted of a post-tensioned concrete design incorporating thickenings for the chemical anchor container dome tie-downs and spoon drain.



BYERWEN MINE BAYS

Hawkins Group designed and constructed two 26m long Cat 793 workshop container mounted domes. The workshop slab consisted of a steel fibre-reinforced concrete design incorporating thickenings for the tie-downs and a 26x12m apron slab and adjoining 26x14.5m external service bay slab.

CARMICHAEL MINE SERVICE BAYS

Hawkins Group were engaged by Mackellar to complete the construction of two HME Service Bays and a Dozer Bay including structural and miscellaneous steel fabrication and erection at the Carmichael Coal Mine in the Galilee Basin. The works comprised: Fabrication of 50t+ of structural steel, gantries, walkways, handrail and dozer rails (in-house); Steel Erection; and Dome Erection.



SONOMA MINE SERVICE BAY

Hawkins Group designed and installed a service bay dome over an existing slab for Thiess at Sonoma Mine, next to the main workshop which was also constructed by Hawkins Group. The dome was installed on a free-standing steel structure to meet the spatial constraints.



HELENSVALE MARKETS

Hawkins Group installed the domes at Helensvale for the Night Quarter Markets.



ACCOMMODATION FACILITIES

WE KNOW TRANSPORTABLE ACCOMMODATION FACILITIES INSIDE & OUT.

Hawkins Group can fabricate smaller custom accommodation facilities to meet your requirements or work with suppliers for larger facilities.

We can design new or expansion accommodation facilities and complete everything from managing the design and BA to logistics, installation and commissioning.

Hawkins Group have been engaged by various accommodation camps, mines, transportable facility manufacturers, other managing contractors and various other client groups to install accommodation facilities.

ACCOMMODATION FACILITIES

FOXLEIGH VILLAGE

Hawkins Group have provided the following services for Foxleigh Village, Middlemount:

- Development & Buildings Approvals;
- Construction of a 28-bedroom extension;
- 108m² Dining hall extension;
- Sewage Main upgrade;
- Refurbishment of over 200 existing poly-ply lined rooms to pre-finished powdercoated plasterboard rooms with new vinyl flooring and FFE for increased asset life cycle.



CURTIS ISLAND

This project involved site set-up, construction of the accommodation buildings combined with general maintenance, carpentry, concreting and finishing for Leighton Contractors.



KERLONG VILLAGE, BURTON MINE

Hawkins Group completed the refurbishment and recommissioning of Kerlong Village and components of the Burton Mine CHPP, TLO and Workshop. These works comprised structural remediation of footings, building repairs and renovation as well as services upgrades and recommissioning. Hawkins Group provided a team in excess of 20 Carpenters, Concreters, Plumbers, Trades Assistants and Cleaners as well as other trades and supporting Project Management and Supervision.



THE MAC MIDDLEMOUNT VILLAGE

Hawkins Group constructed a 64-bedroom accommodation complex to extend the existing camp and cater for growing accommodation demands.



GLADSTONE VILLAGE CAMP

This project involved various general construction and refurbishment works including building a linen store, carpentry, finishing, building rectification and concreting.



NORTH GOONYELLA VILLAGE

Hawkins Group were engaged by Peabody Energy to refurbish North Goonyella Village for the Mines re-opening, works were completed by Hawkins Group between 2023-2024. The works comprised: Footing Remediation Works; General Carpentry; Plumbing; Electrical & Airconditioning Works; and Waterproofing.

ELECTRICAL & MECHANICAL

WE CAN SUPPORT YOUR ELECTRICAL AND MECHANICAL PROJECTS

Hawkins Group provide Electrical & Mechanical services to the mining and commercial industries. With a team of qualified professionals to compliment our Building & Civil Capabilities. We can complete repairs, installations and maintenance on CHPP and Mine Site Infrastructure (Down Day & Shut Down Labour), NPI Facilities, Accommodation Villages, Commercial Projects.

We hold the following qualifications and certifications:



Refrigerant Trading Authorisation:
AU62087



Electrical Contractor Licence:
92416

MAINTENANCE & SHUTDOWNS

Hawkins Group have maintenance and shutdown crews are equipped with modern high quality equipment and tooling along with a stock of the materials required to perform works on demand, efficiently and to the highest industry standards.



CONSTRUCTION

Hawkins Group can provide Project Managent, Procurement Services, Electrical Installation & Comissioning, Power Studies, Fire Detection, Communications, Earthing, Underground Services Installation.



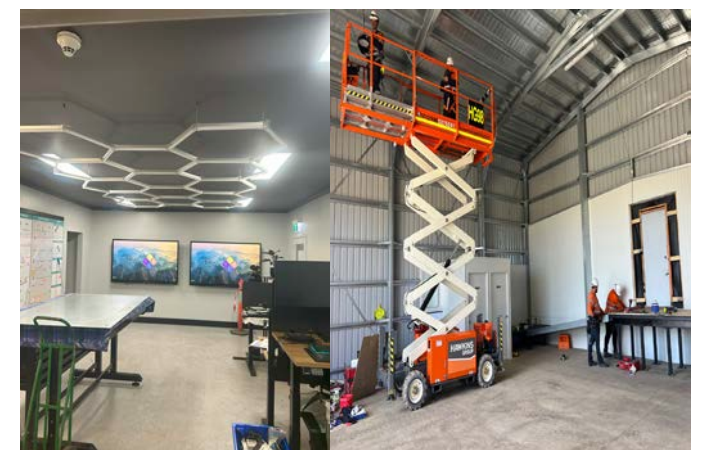
DUST EXTRACTION & PRESSURISATION UNITS

Hawkins Group's experienced tradesman can complete the installation of specialised equipment such as Dust Extraction Units and Air Pressurisation Units.



ACCOMMODATION VILLAGES & OFFICE REFURBISHMENTS

Hawkins Group have completed large-scale airconditioning, power and lighting replacement projects for accommodation villages such as Foxleigh Village, and North Goonyella Village. As well as office refurbishment and upgrade projects.



For Electrical & Mechanical Enquiries please contact:

Tim Batt

Electrical Coordinator | Hawkins Group

M: 0457 525 842 E: tim@hawkinsgroup.com.au

MAJOR INFRASTRUCTURE

WE CAN SUPPORT YOUR INFRASTRUCTURE PROJECT

Hawkins Group have a history supporting major infrastructure projects across Queensland, we can assist projects of any size and offer managing contractor or subcontractor services as required. Whether its site establishment of ongoing labour hire Hawkins Group have the experience and capability to assist your project.

CLEM 7 TUNNEL

Hawkins Group were engaged by the Leighton Bilfinger Burger Joint Venture to provide the following services:

- Finishing work to main tunnel.



GATEWAY BRIDGE UPGRADE PROJECT

Hawkins Group were engaged by the Leighton Abigroup Joint Venture to provide the following services:

- Site Establishment.
- Supply of labour to precast yard and Main Bridge.



EASTERN BUS WAY

Hawkins Group were engaged by Leighton Contractors to provide the following services for the Eastern Bus Way project:

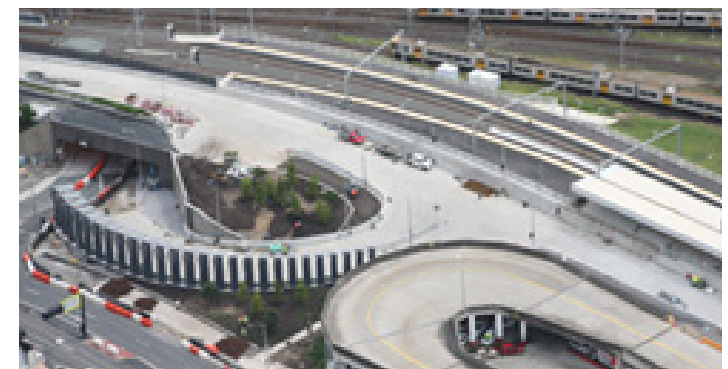
- Site Establishment.
- Labour Hire.



INNER NORTHERN BUS WAY

Hawkins Group were engaged by Leighton Contractors to provide the following services for the Inner Northern Bus Way project:

- Supervisors.
- Draftsmen.
- Carpenters.
- Concreters.
- Labourers.



DEFENCE & AVIATION

WE EXCEL IN HIGH REGULATION / COMPLIANCE ENVIRONMENTS.

Hawkins Group have delivered construction projects in the aviation sector for private airports as well as Defence Bases. Our success in high-regulation and compliance sectors such as Mining & other Resources have translated to continued success delivering projects in operational airfield environments.

DEFENCE AND AVIATION

Our knowledge and experience working in accordance with government processes allows us to meet and exceed our clients expectations for Defence and other Government body projects.

Hawkins Group have performed civil, concreting and carpentry works at various Royal Australian Air Force Bases across Queensland as a subcontractor for Contractors such as CPB Contractors and Lendlease Building.

MACKAY AIRPORT HANGER

Hawkins Group were engaged as the Managing Contractor to construct the private hanger on Mike Jones Street at Mackay Airport.

The project comprised a 680m² structural steel constructed Air Plan Storage Hangar, with 46m² of office and amenity space attached to the front of the building.

Our services comprised everything from coordinating and obtaining Design and Building Approvals to structural steel fabrication and erection.



Hawkins Group personnel have valid Police Checks, are experienced at working on Defence & Aviation Facilities and our Supervisors can coordinate construction works in active airfields with relevant authorities.

We are open to Defence & other Aviation Project opportunities in the capacity of a Managing Contractors, Subcontractor or Supplier and we are also a Pre-Qualified Spotless Defence Subcontractor.



DESIGN & FEASIBILITY STUDIES

THE OPERATIONAL EFFECTIVENESS OF BUILDINGS IS ALL IN THE DESIGN AND SPECIFICATIONS

Our experience in designing everything from fuel farm layouts to racking layout for warehouses helps you get the best results from your construction project.

Our in-house design team and reliable consultants streamline the design process and our 3D modelling technology produces realistic images of projects so all implications can be assessed and pre-tested in a virtual environment.

DESIGN

3D MODELLING

Hawkins Group utilises current 3D technology to produce realistic rendered images and videos of projects at the preliminary or concept design stages to ensure our clients have a clear understanding of how their project will look once it is delivered. 3D walkthrough design videos can serve as a great tool to get all stakeholders on the same page.



TRAFFIC FLOW PLANS

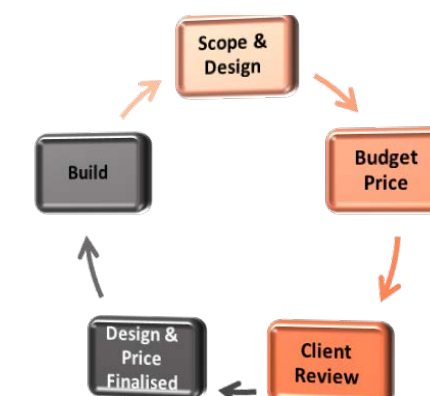
Hawkins Group can create Traffic Flow Plans for industrial facilities, incorporating the types of vehicles and turning circle analysis for the site traffic management plan.

These plans can help clients to assess manoeuvrability of all vehicle classes especially in high risk areas and adjust the project design accordingly. This is important particularly if heavy and light vehicle separation is desirable.

DESIGN COORDINATION

Early involvement with a project design can be greatly beneficial, as we provide value-engineering from design inception and ensure that the design is functional and suitable for construction. We can also work with appointed consultants to steer the project to meet your budgetary constraints whilst keeping the needs of the end-user in mind.

Whether you need a concept design or Development and Building Approvals obtained, Hawkins Group can help.



FEASIBILITY STUDIES

Hawkins Group have been providing Feasibility Studies for our clients for the past thirty years.

We are commonly engaged by mining and resource sector clients across Australia to develop inception/preliminary designs with corresponding budgets for construction projects.

We have over thirty years of pricing data to draw from and an extensive network of reliable repeat subcontractors and suppliers.

We provide feasibility studies and budget pricing for businesses, asset owners & operators, consultants and other contractors.

LABOUR & PLANT HIRE SERVICES

WE CAN HELP TO FULFILL A WIDE RANGE OF LABOUR AND PLANT HIRE REQUIREMENTS.

Whether its planned or reactive maintenance labour, small to large scale civil projects, Hawkins Group can assist.

PLANT HIRE

Hawkins Group offers a fleet of mine-compliant plant and equipment for hire. Our extensive range of company owned plant & equipment ensures we have the right resources available, when and where it is required.

Our comprehensive range of plant for hire includes – excavators, skidsteers, generators, tooling trucks, forklifts & telehandlers, pumps, mobile office and crib facilities to Elevated Work Platforms – this also enables a high level of self-reliance in remote locations.

For further information contact: cqmail@hawkinsgroup.com.au



LABOUR HIRE



Hawkins Group are a compliant Labour Hire Services provider and hold a licence in accordance with the Labour Hire Licensing Act 2017, our licence number is LHL-01859-X3P2T.

We can provide the following labour anywhere in Queensland and have workforces located on the Gold Coast, Brisbane, Mackay & Townsville:

- Carpenters;
- Electricians;
- Refrigeration Technicians;
- Concreters;
- Operators;
- Dogman & Riggers (HRW Licenced);
- Boilermakers;
- Polywelders;
- Labourers; and
- Apprentices.

Our workforce come equipped with tools of the trade, mine compliant site vehicles (if required), police checks and mine compliant inductions and medicals. We can also provide wet hire options with our operators (for our excavators, bobcats, trucks etc.

FUEL & LUBRICANTS

HAWKINS GROUP ARE SPECIALISTS IN CONSTRUCTING FUEL FARMS, LUBRICANT FACILITIES, FUEL TERMINALS, WASH BAYS AND MAINTENANCE WORKSHOPS FOR DIESEL MACHINERY, VEHICLES OR ROLLING STOCK.

We have the skills to design, build and commission the following facilities:

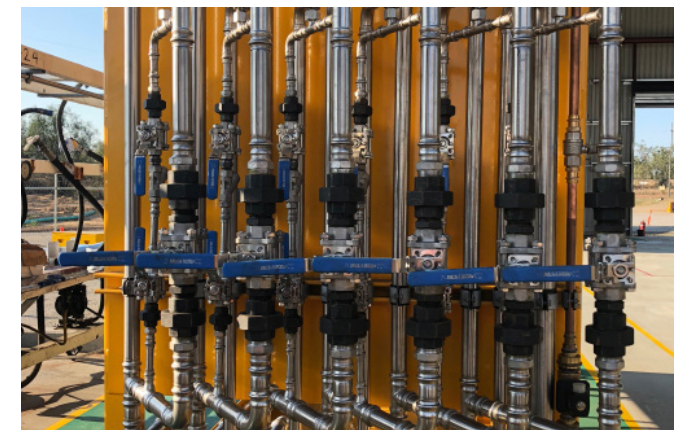
- Fabricating and installing any specialised steel, stainless steel and HDPE pipework.
- Procurement and installation of gas, water and fuel storage tanks.
- Procurement and installation of appropriate pumping equipment.
- Carrying out retrofit of new products to existing live fuel and lubricant facilities.

FUEL AND LUBRICANTS

COPPABELLA ULTRA-CLASS FACILITIES

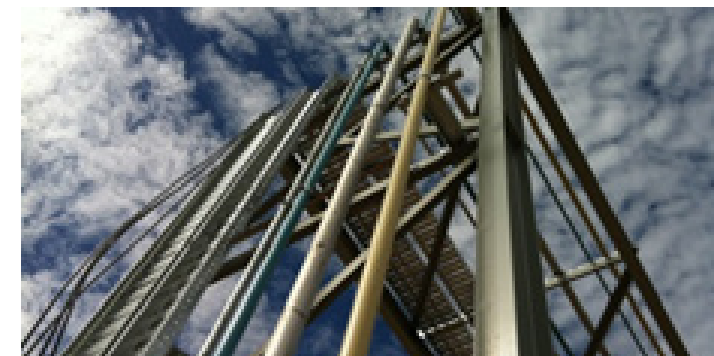
Construction works at Coppabella Included the design and installation of over 300 metres of stainless steel lubricant pipework fed from a separate lubricant facility.

All Workshop Hose reels, wash bay pipework, valving and brass cannons were supplied and installed as part of the facility.



PACIFIC NATIONAL INFRASTRUCTURE ALLIANCE - NEBO FACILITY

The scope included procurement, delivery, fabrication and commissioning of all equipment and pipelines. Approximately 1000 metres of stainless steel piping, fuel unloading facilities and bowzers were installed. Hawkins Group, on behalf of Transtank, were responsible for the site safety and for zero LTIs during 3300 person hours.



STRUCTURAL STEEL FABRICATION

Hawkins Group can fabricate any of your structural steel components. Our south Brisbane based workshop is capable of producing small steel fabrication through to oversized structural steel packages for industrial and mining workshops.

Hawkins Group have used in-house steel fabrication to deliver many of our projects, such as the Moorvale Mine Workshop in Central Queensland, which comprised fabrication of over 95 tons of structural steel.

Having the ability to fabricate structural steel in-house means that we can accelerate projects and avoid delays whilst remaining in control of quality assurance.



CUSTOM FABRICATION

Hawkins Group have the ability to design and fabricate steel to your custom requirements.

Hawkins Group have designed, fabricated and installed custom solutions for items such as:

- Conveyor Protection;
- Light Vehicle Wash Bays;
- Gantry's, platforms and ladders;
- Lifting Equipment;
- Roofing Brackets; and
- Hose Reel Stands.



GENERAL FABRICATION

OUR OWN STEEL FABRICATION WORKSHOPS SOUTH OF BRISBANE GIVE US THE FLEXIBILITY TO PRODUCE BUILDING COMPONENTS QUICKLY AND TO EXACT SPECIFICATIONS.

Whether it's structural steel or a small specialised part, we're not dependent on other suppliers or long-distance shipping schedules.

The requirements of your project will determine whether our fabrication or a ready-made solution will be most suitable and cost-effective for your construction.

Where time allows and cost is critical, we also have proven relationships with offshore fabricators.

OUR HISTORY

Hawkins Group is a privately-owned company, founded by Rod Hawkins in 1989. Today Hawkins Group Pty Ltd & Hawkins Group CQ Pty Ltd are steered by Alex Currie (General Manager) who has grown the Central QLD Mining Business since 2018 & Rod Hawkins who still serves as Director.

The companies have grown on the strength of its relationships with partners and its results for clients in the infrastructure, mining and resources sectors.

We started building houses in 1989 and although we haven't stopped, we have also grown to deliver Projects in the Mining & Resources, Port Infrastructure, Accommodation Village, Major Infrastructure, Defence & Aviation Sectors.

We use a high proportion of our own staff on site so we can guarantee the quality, control the timing, and respond flexibly to special requests. Our skilled and diverse teams have a wide array of expertise and ability to take on fresh challenges.

Hawkins Group perform projects under a range of contract types including design and construct, construct only, fixed lump sum contracts, joint ventures and alliances.



OUR HISTORY - TIMELINE

1989

The Hawkins Group (QLD) is established by Rod Hawkins.



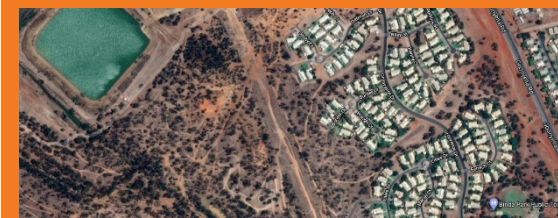
1993 - 1996

Hawkins Group commence construction of spec homes throughout Ipswich, Queensland.
- Hawkins Group construct over 150 houses.



1996-1997

Hawkins Group are expand to Central Queensland with construction award of 40 houses for Shell Coal, Moranbah North Mine.



1998

Hawkins Group build it's first Mining Workshop with the award of the Gun Powder / Capricorn Copper Mine Project, north of Mount Isa.



2005-2009

Hawkins Group deliver a series of MIA's in Central Queensland:

- 2005 - Dawson North;
- 2006 - Saraji Mine;
- 2007 - Poitrel Mine;
- 2008 - Sonoma Mine;
- 2009 - Moorvale Mine; and
- 2009 - Coppabella (Stage 1).

2011-2012

Hawkins Group are awarded the construction of the Middlemount Mine MIA in 2011, followed by a second Project at Coppabella Mine (Stage 2) Ultra Class Workshop in 2012.



2014 - 2015

Hawkins Group deliver GrainCorp's new liquid storage facility at Pinkenba, Queensland.



2017 - 2020

Hawkins Group deliver consecutive MIA projects:
- 2017 - Byerwen Mine MIA;
- 2018 - Coppabella (Stage 3) Workshop Extension;
- 2019-2020 - Foxleigh Mine MIA.



2020

In July 2020 The Hawkins Group (QLD) Pty Ltd was renamed Hawkins Group Pty Ltd.



We look forward to working with old and new clients on any future projects.

2023

Hawkins Group CQ Pty Ltd formed to service continued growth and provide additional services to our clients.

- Increased civil capability with new fleet of mine-spec plant & equipment.
- Electrical Licence 92416 obtained.
- Mackay Office opened.

OUR CLIENTS

BIG CHALLENGES, BIG IDEAS, BIG FUTURES! WHATEVER THE CONSTRUCTION OBJECTIVES, WE TAKE A CLEAR VIEW AND TELL YOU HOW WE SEE IT. OUR TIME-SAVING, COST-SAVING IDEAS COME FREE.

Hawkins Group have a demonstrated ability to form long-lasting, mutually beneficial partnerships with our clients based on building results together and on the underlying principle of honesty.

The following clients can be contacted for a testimonial:

Frank Tate - Maintenance Manager
+61 408 762 773

Iain Ward - CPB Contractors
+61 411 960 584

Marko Lund - Formerly Peabody Energy
+61 448 063 833

Neville Grundy - Quantem
+61 438 229 339



GLENCORE

THIESS



adani™

BHP



MIDDLEMOUNT SOUTH



BRAVUS
MINING & RESOURCES





HAWKINS GROUP

| Building Results



www.hawkinsgroup.com.au